



*The*  
Residential Attractions  
*of*  
**SEAVIEW**  
ISLE OF WIGHT

*With the Compliments of*  
**MESSRS.**  
**WATSON BROS.**  
(K. A. WATSON, F.N.A.A.)  
*House and Estate Agents*  
**SEAVIEW**

Telephone : Seaview 118  
Telegrams : " Watson Seaview "



On Sea Front

# Regent House

SEAVIEW

*BOARD RESIDENCE  
or Bed and Breakfast*

Open to Non-Residents.  
Liberal Catering. Separate  
Tables. Under Personal  
Supervision. Bathing from  
House. Terms Moderate,

Proprietress : **MISS WATERS**

SEAVIEW

# SOLENT EDGE

Situated in one of the best  
positions in Seaview, adjoining  
the Sea and overlooking the  
Solent. Hot and cold water in  
bedrooms. Separate Tables.  
Catering, cooking and comfort  
of visitors personally superin-  
tended. Picnic Baskets supplied  
without extra charge.

**Terms from 2½ Gns. according to  
Season and Room**

TARIFF. Miss K. E. MATTHEWS



OWN GARDEN PRODUCE

YACHTING, BATHING, GOLF AND OWN  
TENNIS COURT AVAILABLE

TELEPHONE - - SEAVIEW 78

SEAVIEW

## HIGH SALTERNS

COUNTRY HOUSE  
HOTEL

The house is situated in 3 acres of wooded grounds and commands magnificent Sea Views. Every modern comfort. Hot and cold water in most bedrooms.

EXCELLENT CUISINE



Barron

Photograph by]

Seaview, seen from an aeroplane

[Aerofilms Ltd.

For all particulars of Houses, Land, etc.  
in Seaview and District

*apply to*

**WATSON BROS.**

**Old-Established  
House and Estate Agents**

**SEAVIEW, I.W.**

(Corner of High Street and Madeira Road)

**Agents for all  
Local Properties**

**Comprehensive Register  
of Holiday Accommodation**

# TRINDERS

*Drapers and  
Ladies' Wear  
Specialists*

Agents for all noted brands  
of Hosiery

PIER RD., SEAVIEW





*THE RESIDENTIAL ATTRACTIONS OF*

# SEAVIEW

Isle of Wight



This Brochure is issued in conjunction with

*THE RESIDENTIAL CENTRES BUREAU*

at whose London Office, 125 Strand, W.C.2,  
information relating to over three hundred towns may be obtained

*Copyright*

A production of

ED. J. BURROW & CO. LTD., *Publishers*, CHELTENHAM & LONDON

Printed in Great Britain

**THE RESIDENTIAL ATTRACTIONS OF**

## THE RESIDENTIAL ATTRACTIONS OF

# SEA VIEW

**Altitude :** In the vicinity the land attains an altitude of 429 feet.

**Domestic Services :** Electricity 8d. per unit, or a fixed standing charge plus 1 d. per unit. Gas costs 11 d. per therm. Abundant supply of pure water.

**Early Closing Day :** Thursday.

**Local Authority :** Though it is nearly three miles from the pier at Ryde to the picturesque suspension structure at Seaview, the latter is actually within the borough of Ryde and is controlled and administered by the Ryde Municipal Authority.

**Population :** Estimated 1,200.

**Rates :** 10/- in the £ per annum.

**Soil and Subsoil :** Fertile loam overlying chalk.

Seaview is an extremely pretty and immensely popular health and holiday resort and residential retreat, equi-distant from Ryde Pier and Bembridge, in the extreme east of the Isle of Wight. It is actually part of Greater Ryde, though a very different sort of place from the town which ranks as the largest in the island; it is just out of the way of





Photograph by]

**A corner of the Bathing Beach, Seaview**

[F. Frith & Co. Ltd.

the main contingent of holiday-makers who have learned to love this little land of lofty downs and fascinating coast; and whether judged from the practical points of view of convenience and economy, or on its purely aesthetic merits, there is no more attractive place in the Isle of Wight at which to reside and thoroughly enjoy the experience. Like Ryde, Seaview is reached by steamer from Portsmouth or Southsea. Boats direct to Sea view from the mainland operate only in summer time, therefore the journey by boat usually ends at Ryde. Ryde Airport is situated between Ryde and Seaview, forming with them the three points of a triangle. Spartan Air Lines Ltd., operated by the Railway Air Services, have regular services to Bembridge Airport, 4 miles from Seaview.

From the northern end of the little town on the Ryde side of Nettles Point, one looks straight across the mouth of Spithead to Portsmouth, but its front as a whole faces the open sea, and offers a very great contrast to the usual seaside "parade." Charming artistic modern houses greet the eye, lining the shore of a very pretty baylet known as Seagrove Bay, backed and surrounded by delightful woods. At certain points the trees crowd down to the water's edge, and on the south shore of the little bay, towards Horestone Point, are huge rocks and boulders. Beyond Horestone Point is another lovely little indentation known as Priory Bay. In the immediate neighbourhood of Seaview are several beautiful country

seats. The most ancient of these, The Priory, situated near Nettlestone, a hamlet on the south of Seaview, was until the Reformation a monastery, originally founded for Cluniac monks about 1155. It stands at the head of a spacious lawn sloping gently to a high ridge overlooking the sea, surrounded by woods traversed by picturesque walks. The shore below it, facing Priory Bay, is a perfect gem of coastal scenery. Seaview itself is almost entirely of modern growth, but its nucleus is a little row of quaint old dwellings (Saltern's Cottages), with steep-pitched roofs, dormer windows and picturesque chimneys. The newer residential roads and shopping thoroughfares are clean, spacious and handsome, and many of them pretty and tree-shaded, Bluett Avenue, Old Seaview Lane, and Pier Road deserving special mention.

Seaview is in its full youthful bloom, and all who prefer quiet and pretty places will find pleasure and delight in it. It has just sufficient amenities and recreations to prevent life becoming stagnant and unsociable; it has a highly picturesque Suspension Pier, 350 yards long, at which, in summer, excursion steamers to and from Portsmouth and Southsea embark and land passengers; a strong Yachting Club with a good club-house; a Pavilion, in which concerts and other entertainments take place; and a number of very excellent shops. The boating facilities, and those for bathing, are many and excellent; facilities exist for tennis; the golf links of the Royal Isle of Wight Golf Club are at St. Helens -

a pleasant walk from Seaview - and there are other courses at Ryde and at Sandown; fishing for whiting and bass can be had on the pier and from boats; canoeing is popular here, and such small craft are perfectly safe in these water; prawning off Horestone Point is another pastime; and here, too, are facilities for badminton, bowls, dancing, football, putting, hacking and hunting, rowing and yachting, and seven miles of clean white sand for a public playground. Motor buses run between Seaview and Ryde, and Seaview and Shanklin. It will be seen from this that the means for recreative pleasure are ample, and if one occasionally hankers after the busy world, either Ryde or Portsmouth may be reached in a matter of moments.

Through Ryde, Seaview residents have access to motor-bus services by which every town and village, and all other places of interest in the Island may be visited. Special motor-coach tours are arranged enabling sightseers to visit Blackgang Chine and Carisbrooke Castle; Osborne House and Whippingham Church; Freshwater Bay, Alum Bay, and The Needles; and to enjoy a grand all-day tour of the island, stopping at places of outstanding beauty and interest en route.

The nearest railway station is Ryde Esplanade, from which one can reach Newport, and from Newport book northward for Cowes, or westward for Yarmouth and Freshwater; continuing through Sandown, Shanklin and Ventnor are reached. Here is a table of road distances

which is certain to be of use to you whether you are on holiday at Seaview or residing here permanently :

Seaview to Nettlestone .....	$\frac{3}{4}$ m.
Nettlestone to St. Helen's .....	1 $\frac{1}{2}$ m.
St. Helen's to Bembridge .....	1 $\frac{1}{2}$ m.
Bembridge to Sandown .....	5 $\frac{1}{2}$ m.
Sandown to Shanklin .....	2 $\frac{1}{2}$ m.
Shanklin to Bonchurch .....	2 $\frac{3}{4}$ m.
Bonchurch to Ventnor .....	1 m.
Ventnor to Blackgang Chine .....	5 $\frac{1}{2}$ m.
Blackgang to Chale .....	1 m.
St. Helens to Brading .....	2 $\frac{1}{2}$ m.
Brading to Bembridge .....	3 $\frac{3}{4}$ m.
Brading to Newport .....	7 $\frac{3}{4}$ m.
Newport to West Cowes .....	5 m.
Newport to Freshwater .....	11 m.
Newport to Yarmouth .....	9 $\frac{3}{4}$ m.
Ventnor to Freshwater .....	19 $\frac{1}{2}$ m.
Freshwater to Alum Bay .....	3 m.
Alum Bay to Totland Bay .....	1 $\frac{1}{2}$ m.
Freshwater to Yarmouth .....	7 m.

Seaview has a parish church (St. Peter's) (erected by visitors'

subscriptions as far back as 1850) and two Methodist chapels. There is also a small undenominational Mission Hall at Nettlestone.

Space will not permit of a description of the charms of the neighbour-hood of Seaview in particular, much less of the island in general, but it must be mentioned that Seaview is close to three other places of exceptional note. **St. Helen's** is picturesquely situated by a sheltered inlet (Brading Harbour), patronized and adorned by a number of swans, and has also a delightful village green. From St. Helen's there is a ferry to Bembridge - a quiet, unconventional old-world spot, with a strikingly picturesque environment, and the view from the summit of the town is exceedingly fine. **Brading** is one of the island's oldest towns its fine old church is partly Transitional Norman and partly Early English. At Brading are the exceptionally well preserved remains of a Roman Villa and a large number of articles of domestic and personal use dating from the Roman period. Other objects of interest are the old village stocks, and a quaint thatched house known as "Little Jane's Cottage." There are many beautiful walks in the neighbourhood.

This cluster of little towns on the eastern side of the island possesses all the residential attractions which appeal to people of taste and leisure who like to live in reposeful surroundings within easy reach of the activities of town. There is plenty of accommodation for all whose enjoyment of Seaview must be limited to temporary residence - for instance,



Photograph by ]

**The Beach south of the Pier**

[ E. A. Sweetman & Son

# NORTHBANK HOTEL

SEAVIEW

Telephone : Seaview 144

**T**HE Hotel is ideally situated directly overlooking the Sea, and is beautifully furnished and equipped in perfect taste. The position is absolutely quiet, yet in the very centre of Seaview, and the Hotel has direct access to the beach.

There is hot & cold water in the bedrooms, also gas fires and extremely comfortable beds.

The Hotel is run under the personal supervision of Lady Helen Barlow and the comfort of the guests is studied in every way.

**TERMS FROM 6 GNS. -MID JULY-MID SEPT.**

**WINTER TERMS FROM 3½ GNS.**



## CONCLUSION

the delightful Plas-yn-Dre Private Hotel (see also Advertisement Index on page 23), open all the year round, is so thoroughly up-to-date in every detail of modern hotel comfort, convenience and service, that it even provides its guests with the use of private hard tennis courts and squash courts—and Messrs. Watson Bros., House and Estate Agents, Seaview, who are the recognized link between vendors and purchasers of local real estate of every description, have very much pleasure in placing their intimate knowledge of local properties freely at the disposal of all prospective residents. They have also a very complete register of furnished houses and all apartments. Houses and land in and near Seaview show a healthy tendency to increase in value each year.

Telephone :                      Telegrams :  
Seaview 120                      " Roseneath Seaview "

# ROSENEATH PRIVATE HOTEL

## SEAVIEW

Board Residence  
from 2½ guineas weekly

**Proprietress : Miss D. Matthews**

Station—  
Ryde Esplanade, Southern Railway  
(Seaview, 15 minutes from Ryde)

---

---

SEAVIEW

# PLAS-YN-DRE

## PRIVATE HOTEL

Telephone : Seaview 108

*Badminton, Hard Tennis and  
Squash Courts*

Splendidly situated only a few minutes to sea, and bus route to all parts of the island. Open all the year. Hot and cold water, gas or electric fires in all main bedrooms. Five bathrooms (no charge). Garage near. Entire charge of children taken during vacation.

Large annexe opposit .

*Full particulars and tariff on request*

**Proprietress : Mrs. A. WILLIAMS**

---

---

*Page sixteen*





Photograph by]

A general view of Seagrove Bay, Seaview

[F. Frith & Co. Ltd.

# SEAVIEW PIER HOTEL

*The Leading and only Licensed Hotel directly facing Sea*



Unrivalled Position  
(First-class)

**Yachting, Boating,  
Surfing**

**Excellent Sands**

**Ideal Bathing  
from the Hotel**

Tennis nearby. Golf  
within easy reach.  
Garage adjoining.

**BALLROOM.** Dancing  
and Hotel Entertain-  
ments free to residents

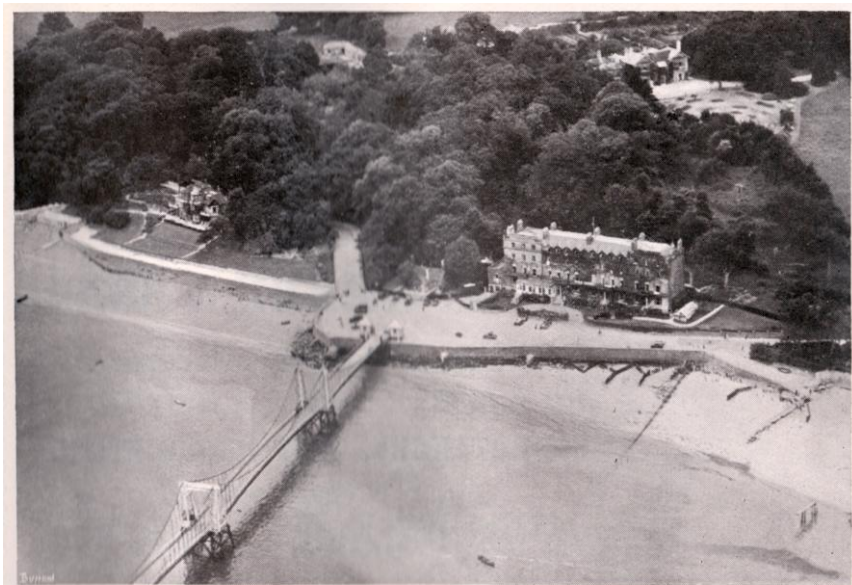
Season from middle June  
to middle September

Early Season : Specially  
Reduced Terms to meet  
requirements

*Tariff sent on application to*  
**W. S. FARNELL**  
*Proprietor and Manager*

Telephone - Seaview 6  
Grams : 'Farnell Seaview'

Station : RYDE



Seaview

Photograph by]

**The Pier and the Pier Hotel, Seaview**

[Aerofilms Ltd.



TELEPHONE : SEAVIEW 99

## **W. Bull & Sons**

*Builders, Painters, Decorators,  
Plumbers ——— Electricians*

**UNDERTAKERS, TENT PROPRIETORS**

Repairs of every description

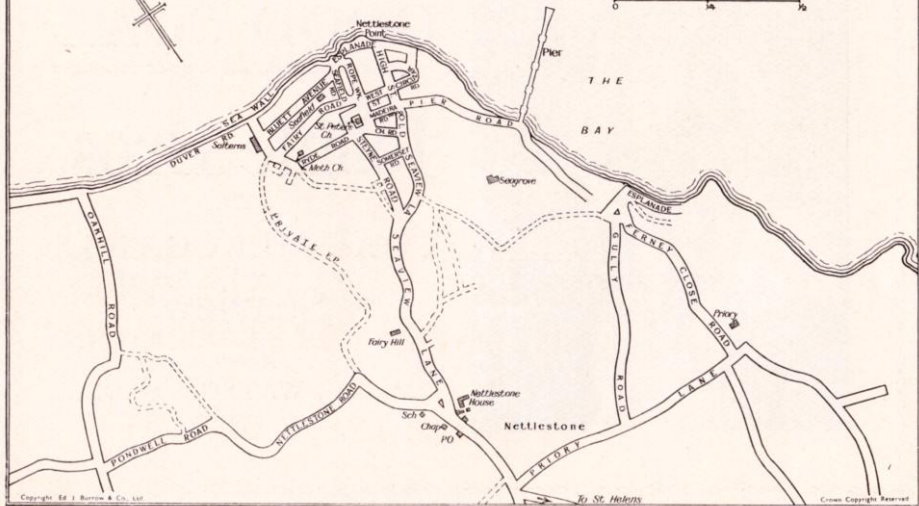
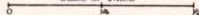
**“ THE BRIARS,” SEAVIEW**

S P I T H E A D



# PLAN OF SEAVIEW

Scale of 1/4 Mile





For  
**GOOD COAL**

**Jolliffe Bros.**

LTD.

COAL MERCHANTS

**Seaview**

*Agents*

**Messrs. WATSON BROS.**  
**SEAVIEW**



# *At Your Service*

*for*

## **Accommodation**

*See Page*

Fairy Hill Guest House, Nettlestone ... ..	iv of cover
High Salterns Country House Hotel, Seaview ... ..	1
Northbank Hotel, Seaview ... ..	14
Pier Hotel, Seaview ... ..	18
Plas-yn-Dre Private Hotel, Seaview ... ..	16
Regent House, Board Residence, Seaview ... ..	ii of cover
Roseneath Private Hotel, Seaview ... ..	15
Solent Edge, Seaview ... ..	ii of cover

## **Building, Decorating, Plumbing and Electrical Engineering**

W. Bull & Sons, "The Briars," Seaview ... ..	20
--	----

## **Drapery and Ladies' Wear**

Trinders, Pier Road, Seaview ... ..	4
-------------------------------------	---

## **Good Coal**

Jolliffe Bros. Ltd., Agents—Watson Bros., Seaview ... ..	22
--	----

## **Laundering and Cleaning**

Vectis Steam Laundry Co. Ltd., Ryde ... ..	iii of cover
--	--------------

## **Selected Cows' Milk**

G. & W. Nash, Salterns Dairy, Seaview ... ..	24
--	----



ESTABLISHED 1851

# G. & W. NASH, *Dairymen*

Selected Cows' Milk for Children and Invalids  
direct from our own farms

**SALTERNS DAIRY, SEAVIEW**



Telephone 2684

# VECTIS STEAM LAUNDRY CO. LTD. RYDE

---

**Shirts and Collars a speciality**

---

Curtains and Tapestries carefully  
cleaned • Special attention  
given to all classes of work

*Our Vans collect and deliver to all parts  
twice weekly*

**Hygienic Methods. Prompt Delivery**

Where to stay in **NETTLESTONE**

Visit the Garden Isle (Seaview is the sweetest flower in that garden) and stay at

## **FAIRY HILL GUEST HOUSE**

Telephone : Seaview 20

(Ryde Esplanade Station, Southern Railway)



**F**AIRY HILL is a Mansion standing in over 3 acres of ground, commanding glorious views of the sea. Beautifully furnished throughout on modern lines, with gas fires in bedrooms. Spacious dining rooms and comfortable lounge overlooking the lawns. Electric light. Baths. Constant hot water. Garage. Tennis, and every convenience for the comfort of touring parties. Excellent cuisine. Own milk and garden produce.

AN IDEAL WINTER  
RESIDENCE

**Terms : from 2½ Guineas  
according to season**

**Under the personal supervision of the Proprietress : Mrs. Morris**